

Model Number
9200D

LOW FREQUENCY PORTABLE SHAKER TABLE

Revision: B
ECN #:

Frequency Range (operating, 100 gram payload)	0.7 Hz – 2 kHz	42 – 120k CPM
Max Acceleration Amplitude (100 Hz, no payload)	2 g pk	19.6 m/s ² pk
Max Velocity Amplitude (10 Hz, no payload)	12 in/s pk	305 mm/s pk
Max Displacement Amplitude (1 Hz, no payload)	200 mils pk – pk	5 mm pk – pk
Maximum Payload ⁽¹⁾	800 grams	

ACCURACY OF READOUT

Acceleration and Velocity (2 Hz to 2 kHz) ⁽²⁾⁽⁵⁾	±3%
Acceleration and Velocity (0.7 Hz to 2 kHz) ⁽²⁾⁽⁵⁾	±10%
Displacement (3 Hz to 15 Hz) ⁽³⁾	±3%
Displacement (1 Hz to 150 Hz) ⁽³⁾	±10%
Displacement (0.7 Hz to 150 Hz) ⁽³⁾	±2 dB
Amplitude Linearity (100 gram payload, 100 Hz)	< 1% up to 2 g pk
Waveform Distortion (1 Hz to 5 Hz)	Typically < 15%
Waveform Distortion (>5 Hz to 20 Hz)	Typically < 10%
Waveform Distortion (>20 Hz to 2 kHz)	Typically < 7%

UNITS OF READOUT

Acceleration (peak and RMS)	g	m/s ²
Velocity (peak and RMS)	in/s	mm/s
Displacement (peak to peak)	mils	µm
Frequency	Hz	CPM

Internal Battery (sealed solid gel lead acid)	12 VDC, 4 amp hours
AC Power (for recharging battery)	110 – 240 Volts, 50 - 60 Hz
Operating Battery Life ⁽⁴⁾	
100 gram payload, 100 Hz 1 g pk	14 hours
100 gram payload, 1 Hz 0.02 g pk	7 hours

TEMPERATURE

Operating	32° - 122° F	0° - 50° C
-----------	--------------	------------

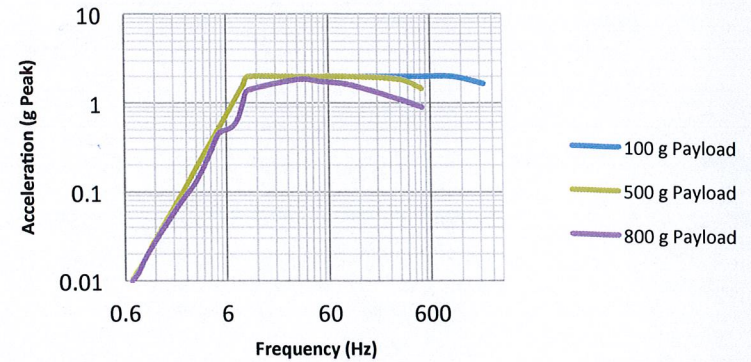
INPUT/OUTPUT

External Source In (Max)	1V AC RMS
Monitor Reference Out	100 mV/g (nominal) - Buffered internal reference output

NOTES

- [1] Operating range reduced at higher payloads. Reference manual for full details.
- [2] Measured with 66 gram quartz reference accelerometer.
- [3] Measured with laser displacement interferometer.
- [4] As shipped from factory in new condition.
- [5] Depending upon payload at higher frequencies transverse motion may cause localized increased measurement uncertainty

Maximum Acceleration vs. Frequency



PHYSICAL

Dimensions (H x W x D)	8.5 x 12 x 10 in	22 x 30.5 x 28 cm
Weight	18 lbs	8.2 kg
Thread Size	¼-28	n/a
Integral Armature Lock	Supplied	

SUPPLIED ACCESSORIES

Accessory Pouch
Shipping Lock
9100-PS01: Power Supply and Plug Adaptors
081B20: ¼-28 to ¼-28 Mounting Stud
081A08: 10-32 to ¼-28 Mounting Stud
080A118: 1 in (25.4 mm) Mounting Pad

(OPTIONAL): Proximity probe adaptor kit, supports probes with common case threads ranging from M6 to 3/8 in. Includes Mitutoyo micrometer and nickel-plated 4140 steel target.

All specifications are at room temperature unless otherwise specified.

ICP® is a registered trademark of PCB Piezotronics, Inc.

In the interest of constant product improvement, specifications may change without notice.



Project Engineer: JBM	Product Manager: MIES	Mkt Team Leader: [Signature]	Spec Number: PS-0122
Date: 5-11-16	Date: 5-11-16	Date: 5-11-16	

THE MODAL SHOP



A PCB GROUP CO.

3149 East Kemper Road
Cincinnati, OH 45241

800-860-4867
513-351-9919

Fax (513) 458-2172

info@modalshop.com
SAM-F020 revNR 04/04/03